

INCLUSION AGENCY TASMANIA

Providing Inclusion Support to Tasmanian Early Childhood
Education and Care Services

Gowrie

LADY GOWRIE TASMANIA



Inclusion Support Program (ISP)

Lady Gowrie Tasmania is the state-wide provider of the Inclusion Support Program (ISP) which is funded by the Australian Government Department of Education, Skills and Employment.

The aim of the ISP is to support Early Childhood Education and Care Services to improve their capacity and capability to provide quality inclusive practices, to support the inclusion and active participation of children with additional needs alongside their typically developing peers within daily programs.

Additional needs may arise for children who:

- have a disability or developmental delay
- are presenting with challenging behaviours
- have a serious medical or health condition, including mental health
- are presenting with trauma-related behaviours
- Aboriginal and Torres Strait Islander children
- children from culturally and linguistically diverse backgrounds
- children from refugee or humanitarian backgrounds

How we will support your service

Lady Gowrie Tasmania have a network of Inclusion Professionals across the state to work directly with your service to:

- Provide practical support to educators on inclusive practice to overcome specific inclusion barriers.
- Support educators to reflect, acknowledge and identify their strengths.
- Support educators to reflect on understandings of inclusion and identify inclusion barriers.
- Assist educators and teams to critically reflect on their practice and identify possibilities for change.
- Facilitate access to all Inclusion Support Program (ISP) resources including Specialist Equipment and funding.
- Assist your service to develop a tailored Strategic Inclusion Plan (SIP) which documents identified inclusion barriers together with inclusive practices and strategies for implementation at either a whole of service or care environment level.
- Support your service to develop links with relevant community groups, services and organisations.
- Work in partnership with families and other support networks.



Inclusive Practices

- Every child has the right to experience high quality early childhood education, where they can play, discover and learn alongside peers.
- All children are viewed as being capable learners and as contributors in Early Childhood Education and Care Services.
- Every child's strengths and interests are acknowledged and reflected within daily programs.
- Collaboration and building partnerships with families and communities underpins educator practice.
- Diversity is acknowledged and is viewed as a resource for learning and growth.
- The focus is on the whole environment and not just an individual child.
- Educators work as a team.
- All educators identify inclusion barriers and learn ways to overcome them.

SPECIALIST EQUIPMENT LIBRARY

Specialist Equipment Library comprises of a range of equipment and resources which are available to eligible Early Childhood Education and Care Services to facilitate and support the inclusion of a child or children with a disability within all aspects of the daily program.

The need for specialist equipment must be identified in a service's Strategic Inclusion Plan (SIP) and be recommended by the child's therapist.

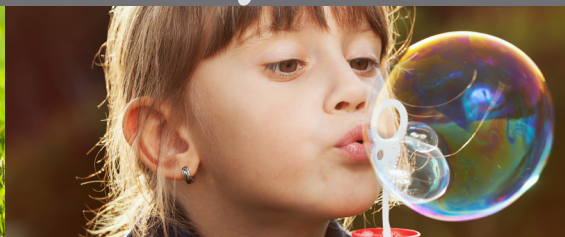
ELIGIBLE SERVICES

Please refer to ISP Guidelines <https://www.education.gov.au/inclusion-support-program-isp>

INCLUSION DEVELOPMENT FUND MANAGER

www.idfm.org.au

'Children First'





INCLUSION AGENCY TASMANIA

The Inclusion Support Program is funded by the Australian Government
Department of Education, Skills and Employment.

HEAD OFFICE CONTACT DETAILS

346 Macquarie Street South Hobart
PO Box 422 South Hobart TAS 7004

T: 6230 6840

LAUNCESTON OFFICE

T: 6324 1360

BURNIE OFFICE

T: 6431 3026

Freecall: 1800 647 718

www.gowrie-tas.com.au

inclusion@gowrie-tas.com.au

As Inclusion Professionals (IP's) work predominantly in
Early Childhood Education and Care Services across the state,
please direct any enquiries to Head Office so we can
ensure a timely response to your enquiry.